

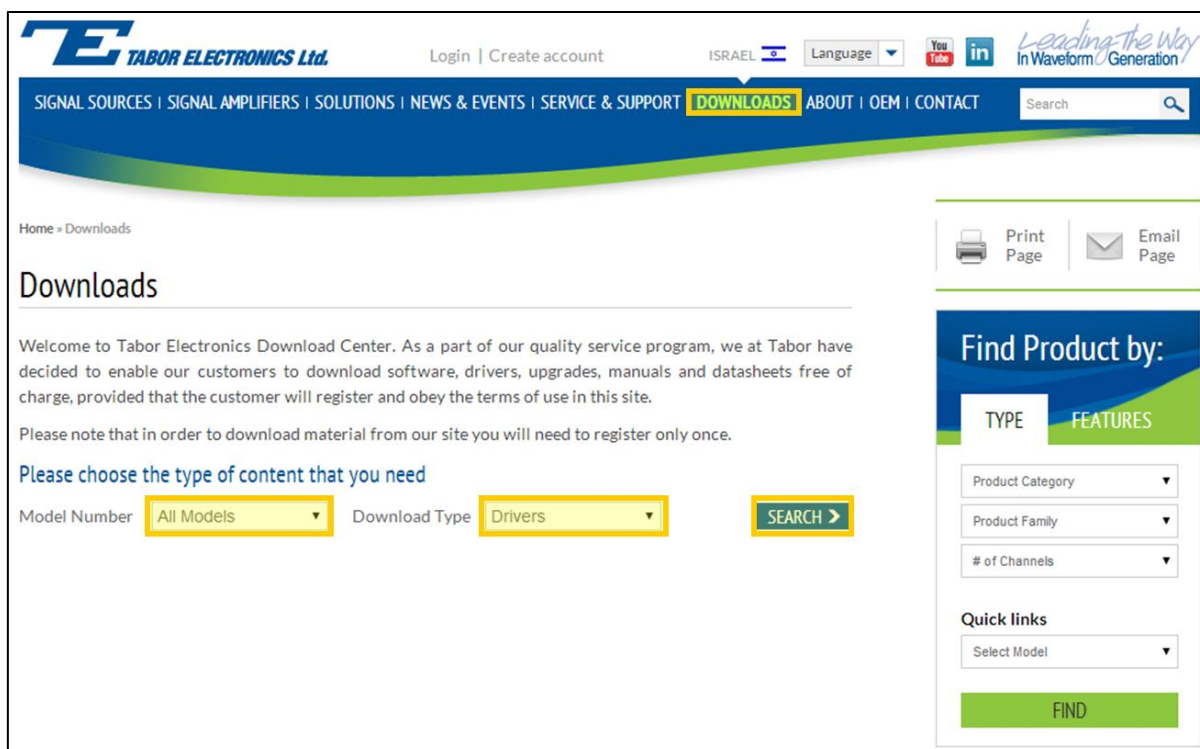
How to Simply Connect WX, WS & PM-A Series via USB

This document contains instructions on how to simply **connect to Tabor Electronics devices** via their USB port. The following devices are covered in this document.

- ◆ Entire WX Series
- ◆ WS8351 / WS8352
- ◆ PM8571A / PM8572A

➔ **To connect the Tabor unit via the USB port:**

1. Install the IVI Foundation device driver, which can be accessed either on the CD-ROM disk provided with your Tabor device, or from Tabor Electronics web site at <http://www.taborelec.com/>.
2. To download the driver from the web site, click on **Downloads**, and select the model from the **Model Number** drop-down box, and select "Drivers" from the **Download Type** drop-down box. Click on the **Search** button.



The screenshot shows the 'Downloads' page of the Tabor Electronics website. The header includes the company logo, navigation links (Login, Create account, ISRAEL, Language), and social media icons. The main navigation bar highlights 'DOWNLOADS'. The page content includes a welcome message, a note about registration, and a section titled 'Please choose the type of content that you need'. This section features two dropdown menus: 'Model Number' (set to 'All Models') and 'Download Type' (set to 'Drivers'), followed by a 'SEARCH >' button. On the right side, there are links for 'Print Page' and 'Email Page', and a 'Find Product by:' section with filters for 'TYPE' and 'FEATURES'. The 'TYPE' filter includes 'Product Category', 'Product Family', and '# of Channels'. The 'FEATURES' filter includes 'Quick links' with a 'Select Model' dropdown. A green 'FIND' button is at the bottom of the filter section.

Download a suitable IVI Foundation driver (for either 32-bit or 64-bit operating systems) from the selection of drivers that appears.

Model

Drivers	Device driver by IVI Foundation (32 bit OS)	02/02/2014  Download (7.6 Mb) Ver. 2.2.1
Drivers	Device driver by IVI Foundation (64 bit OS)	02/02/2014  Download (10.7 Mb) Ver. 2.2.1

- To activate the USB interface, access the **Select Interface** screen from the **Utility >> Remote Interface** menu, select the **USB** option, and press **ENTER**.



- Connect your computer to the device using a USB cable. The following messages will appear on your computer screen:



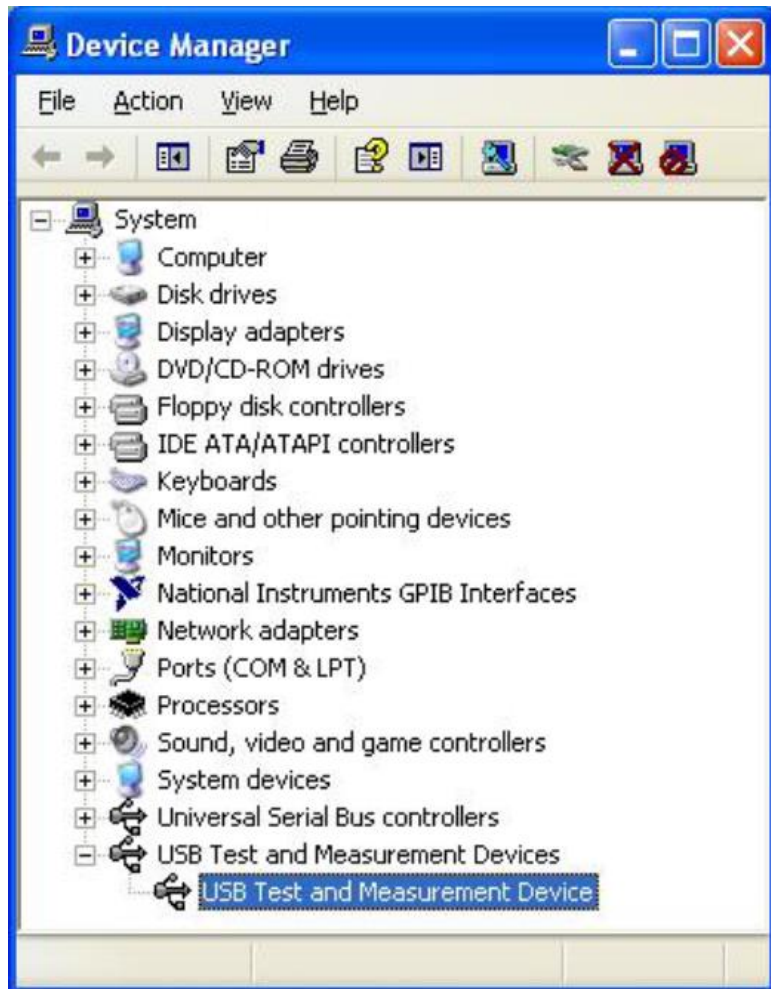
5. The Hardware Wizard appears as shown below. Choose the **Install the software automatically (Recommended)** option and click **Next**.



6. Upon completion of the installation, the window shown below appears. Click **Finish**.



7. To make sure the device's USB port is correctly configured, open your Device Manager (**Control Panel >> Hardware and Sound >> Devices and Printers >> Device Manager**) and compare the settings to the settings displayed in the window below.



For More Information

To learn more about Tabor's solutions or to schedule a demo, please contact your local Tabor representative or email your request to info@tabor.co.il. More information can be found at our website at www.taborelec.com

© Proprietary of Tabor Electronics Ltd.